

## **Mission:**

*STEP, and our partners, facilitate Solutions That Empower People to overcome their barriers to economic, educational, and developmental success within the communities we serve.*

## **Core Values:**

*We believe our approach in serving our community and our interaction in the workplace are as important as our mission. Therefore, we value and demonstrate our commitment to the following:*



### **TEAMWORK**

We support one another and endeavor to work together at all times. Regardless of program or position, we win together; we lose together. We value community partnerships and community partners are vital team members.



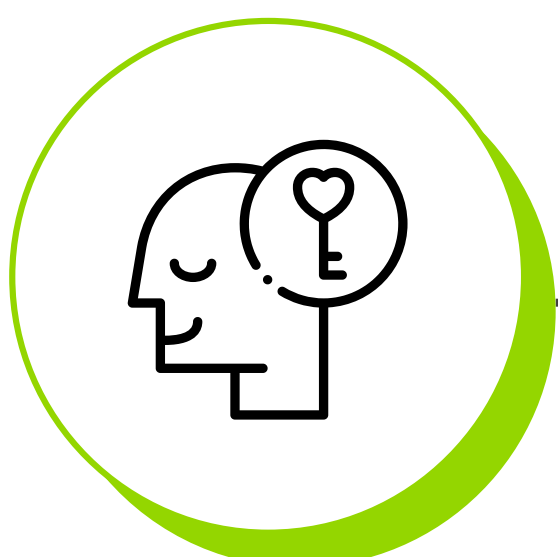
### **INTEGRITY**

We will show compassion and dignity to those we serve at all times. Everyone is worthy of and will be treated with respect. We acknowledge that no one individual is more important than another.



### **RESPECT**

We will be honest in all our dealings and will constantly strive to do the right thing. We embrace mistakes that are made in the right spirit as long as we are truthful. We are accountable to our funders, our community, our clients, and to one another.



### **SERVICE**

We believe in servant leadership in the workplace and our community. Position or title doesn't bring power or privilege, but a responsibility to serve.



### **GROWTH**

Growth is a requirement of improvement. We are committed to growing our agency, our capacity, our services, and our impact.